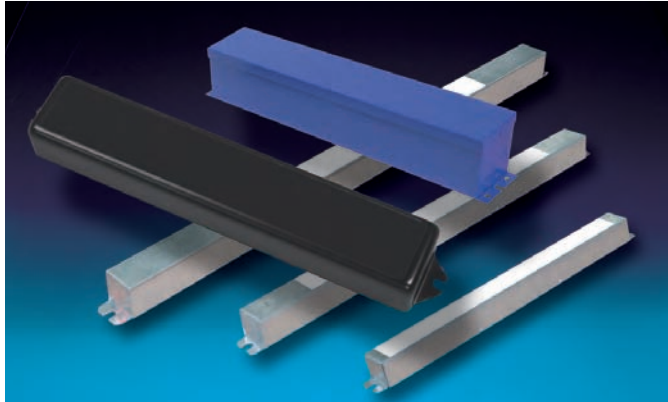


FPS Series Fluorescent Emergency Lighting Ballasts



Standard Features

Reliability

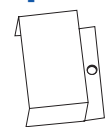
The FPS Series has a 3-year full warranty. Each unit is fully computer tested.

Unit Data

The FPS Series is self-contained in one compact housing for easy installation and maximum mounting flexibility. FPS units can be wired to operate with switched, unswitched or normally off fixtures without affecting normal operation. Units are also compatible with standard, energy-saving, dimming and electronic AC ballasts. Upon failure of AC power, FPSI-32 and FPSU-28 Series automatically switches to the emergency mode, maintaining illumination of one lamp within the fixture. FPSI/U and FPS-HL units will maintain operation of one or two lamps when switched to the emergency mode. When AC power is restored, the FPS Series automatically returns the fluorescent lamps to normal operating mode and the solid state charger begins recharging the battery.

The FPS-540 is self-contained in one compact housing for easy installation and maximum mounting flexibility. The FPS-540 can be wired to operate a switched, unswitched, or normally off fixtures without affecting normal operation. The FPS-540 operates T5 or T8 lamps, including HO and 4-pin long compact fluorescent lamps from 40 -55 watts, with an initial output of up to 1300 lumens. When AC power is restored, the FPS-540 automatically returns the fluorescent lamps to the normal operating mode and the solid state charger begins recharging the battery. Testing the FPS-540 is made easy by using a one-piece indicator and test switch.

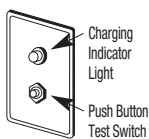
Optional Features



Description

External mounting kit (not required for FPS-HL) includes wire bundle covers for external mounting-R
Damp location listing (see unit selection chart)-DL

Add Suffix



Accessories

Remote test switchRTS-1
includes single gang chrome finished mounting plate
Test switch kit for FPSI32-TBTS

How To Order (example)

FPSI-32	-	R
Series		Option Suffix
FPS-500		External mounting kit
FPS-825		
FPSU-28		
FPSI/U		
FPS-HL		
FPS-540		
FPS-80D		

Model No.	Dimensions			
	A	B	C	D
FPS-500	13-3/4"	14-1/4"	1-3/16"	1-3/16"
FPSI-32	9"	9-5/8"	1-1/2"	2-3/8"
FPS-825	17"	17-1/2"	1-3/16"	1-3/16"
FPSU-28	9"	9-1/2"	1-1/2"	2-3/8"
FPSI/U	12-1/2"	13-1/8"	1-1/2"	2-1/4"
FPS-540	21"	21-1/2"	1-3/16"	1-3/16"
FPS-80D	12-3/4"	13-1/8"	1-1/2"	2-3/8"
FPS-HL	15-7/8"	16-3/8"	3"	3"

The FPS Series emergency ballasts are used to convert new or existing fluorescent fixtures into emergency lighting units. Eliminating the cost and installation of separate, sometimes unsightly emergency lighting units. Seven models are offered to satisfy different applications requirements and lumen output:

FPS-500 and FPS-825 operate with most 2'-4' T5 or T8 PL lamps. The FPS-825 also operates HO and 4 pin long compact fluorescent lamps from 40 through 55 watts.

The FPSI-32 and FPSU-28 are about the size of standard ballasts and can be installed inside the ballast channel of most fluorescent fixtures. These units are also UL listed for mounting kit option (R).

The FPSI/U is UL listed for mounting inside or outside of the fixture.

The FPS-HL is a high output fluorescent emergency lighting ballast that is capable of producing 1450 to 3000 lumens.

UL Listed to Standard 924.

Complies with NEC, Life Safety Code and OSHA

Sealed Maintenance-Free

- Nickel-Cadmium Batteries

Lamp Operation

FPS Series can operate U-Shaped, T-8, Circline, Octron* and energy saving types.

FPS-500 Series can operate T5 or T8 PL lamps

FPS-825 Series can operate T5, T8, HO or 4 pin long compact PL lamps

FPSI/U Series should be used for Power Groove*, VHO and SHO lamps.

FPS-HL Series can operate Single, BI-PIN and 4 PIN lamps.

*Octron is a registered trademark of Sylvania *Power Groove is a registered trademark of G.E.

Unit Selection Chart

Model No.	Lamp Operated in Emergency Mode	Emergency Illumination Time	Lumens	Wire End Caps
FPS-500	1 lamp 2'-4'	90 min.	500	Optional order #EC54
FPSI-32	1 lamp 2'-4' (20W-40W)	90 min.	550	Optional order #EC6
FPS-825	1 lamp 2'-4'	90 min.	825	Optional order #EC54
FPSU-28	1 lamp 2'-8' (45W-75W) or 2 lamps 2'-4' (20W-40W)	90 min.	700	Included
FPSI/U	1 lamp 2'-8' (20W-215W) or 2 lamps 2'-4' (20W-40W)	90 min.	1300	Included
FPS-540	1 lamp 2'-4' (40W-50W) Most 2'-4' T5 or T8 and 40-55 watts 4 pin compact fluorescent	90 min.	1300	Optional order #EC54
FPS-80D	Most 2'-8' single, bi-pin T8-T12, long compact, HO+HVO fluorescent lamps	90 min.	1300	Not required
FPS-HL	1 lamp 2'-8' or 2 lamps 2'-4' or 42W 4 pin compact fluorescent	90 min.	3000	Not required

Outline and Dimensions

Dimensions are approximate and subject to change.

