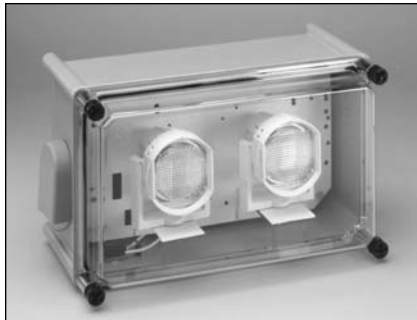


Type No. _____
 Job Name _____
 Catalog No. _____



Shown: N4X6L18



Shown: N4X6L18IH76W



N4X Series

- Low Profile Corrosion and Moisture Resistant
- 6 Volt, 14 - 50 Watts
12 Volt, 36 - 50 Watts
- Maintenance Free, Sealed Lead Calcium or Nickel Cadmium Battery
- Enclosure meets NEMA 3, 3r, 4, 4x, 12 and 13 Classifications

Electronics

- 120/277 VAC dual voltage input capability
- Lead calcium units use a fully automatic, voltage regulated, current limited, solid-state charger
- Nickel cadmium units feature a solid-state, constant current charger
- Labor saving AC lockout feature
- Brownout protection activates lights when AC voltage drops 20% below nominal
- Low voltage disconnect prevents deep battery discharge

Application

- Industrial locations where water, oil and dust resistant equipment is required
- Unit with internal heads (IH) option is ideal for food processing and washdown areas

Code Compliance

- UL 924 listed
- UL wet and damp location listings optional 50°F (10°C) to 104°F (40°C)
- Enclosure meets NEMA 3, 3r, 4, 4x, 12 and 13 classifications
- NFPA 70 and NFPA 101, NEC, BOCA, OSHA, and IBC illumination standards
- NSF listing standard

Operation

DC Voltage	Unit	Watts to 87½ of Rated Voltage*			
		1½ hrs.	2 hrs.	4 hrs.	8 hrs.
6	N4X6L18	18	14	7	--
	N4X6L25	25	19	9.5	--
	N4X6L36	36	27	14	7
	N4X6L50	50	37.5	19	10
	N4X6N14	14	10.5	5.5	--
	N4X6N18	18	14	7	--
	N4X6N25	25	19	9.5	--
12	N4X6N50	50	37.5	19	10
	N4X12L36	36	27	14	7
	N4X12L50	50	37.5	19	10
	N4X12N50	50	37.5	19	10

* Per NEC Specs

Housing

- Enclosure meets NEMA 3, 3r, 4, 4x, 12 and 13 classifications
- Watertight enclosure is constructed of gray fiberglass reinforced polyester
- Fully gasketed
- No exposed metallic hardware
- Includes two 7 or 9 watt black polycarbonate externally mounted lamp heads
- Internally mounted white or black polycarbonate lamp heads are available with "IH" option (up to 25w units only)
- Sealed test switch

Battery

- Choice of maintenance free, sealed lead calcium or nickel cadmium batteries
- Lead calcium battery has an expected service life of 5 years with an operating range of 65°F (19°C) to 85°F (30°C)*
- Nickel cadmium battery has an expected service life of 10 years with an operating range of 20°F (-7°C) to 95°F (35°C)*

* Increases or decreases in temperature will affect battery performance and/or capacity. Optimum battery performance realized at 77°F (25°C).

Electrical Specifications

120 VAC - 0.15 amps, 18 watts
 277 VAC - 0.07 amps, 18 watts

Warranty

Electronics: 3 years
 Battery: 1 year full, 4 years pro-rata (lead calcium)
 5 years full, 5 years pro-rata (nickel cadmium)

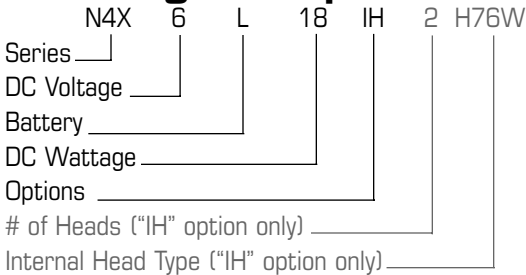
Ordering Information

N4X					
SERIES	DC VOLTAGE	BATTERY	DC WATTAGE		OPTIONS ¹
N4X	6 = 6 Volt 12 = 12 Volt	L = Lead Calcium N = Nickel Cadmium	Lead Calcium 6 Volt 18 = 18 watts 25 = 25 watts 36 = 36 watts 50 = 50 watts 12 Volt 36 = 36 watts 50 = 50 watts	Nickel Cadmium 6 Volt 14 = 14 watts 18 = 18 watts 25 = 25 watts 50 = 50 watts 12 Volt 50 = 50 watts	EX = Special Input Transformer (Specify voltage and frequency) IH = Internally Mounted Lamp Heads* (Up to 25w units only) *Specify head type below TD1 = 120 VAC Time Delay ² TD2 = 277 VAC Time Delay ² TP = Tamperproof W = UL Wet Loc. Listing Z = UL Damp Loc. Listing

ACCESSORIES (Ordered Separately)
EMF = External Mounting Feet
NTPTOOL = Tamperproof Screwdriver
PVS = Polycarbonate Vandal Shield
WG5 = Wire Guard

NOTES:
1) Some option combinations may impact UL listing. Consult factory for specifics.
2) 15 minute delay.

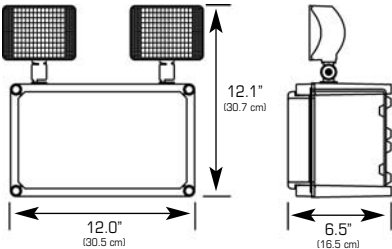
Ordering Example



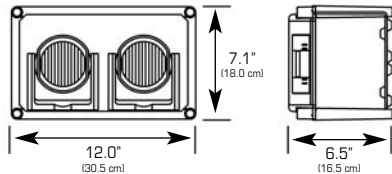
NEMA Classifications

- NEMA 3:** Provides a degree of protection against windblown dust and rain.
- NEMA 3r:** Provides a degree of protection against falling rain.
- NEMA 4:** Protects enclosed equipment against all types of water entry.
- NEMA 4x:** Same as NEMA 4 with addition of corrosion resistance.
- NEMA 12:** Protects enclosed equipment against entry of fibers, dirt and dust.
- NEMA 13:** Provides a degree of protection against lint, dust seepage, external condensation, and spraying of water, oil and non-corrosive liquids.

Dimensions





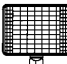


With Internal Heads (IH) Option



Dimensions are approximate and subject to change.

Lamp Head Selection

Specify for internal heads (IH) option only. (14, 18 and 25 watt models only)

"H" Head 6 Volt	Order Code White (Black)	Lamp Wattage
 	H76W(B) H126W(B)	7 Watt 12 Watt
"J" Head 6 Volt	Order Code White (Black)	Lamp Wattage
  	J66(B) J76(B) J96(B)	5.4 Watt 7 Watt 9 Watt

Suggested Specification

Furnish and install LightGuard's emergency lighting model _____. The unit shall be constructed to meet Underwriters Laboratories, Inc. Standard #924. Upon failure or brownout of utility power, the units shall automatically transfer to battery power and maintain the required illumination for a period of 90 minutes. Upon restoration of utility power, the charger shall restore the battery to full charge per UL 924 standard requirements.

CHARGER - Sealed lead calcium battery units shall be equipped with a solid-state constant voltage type charger with a current-limited charge rate. Charger shall provide a charging voltage accurate to within 0.05 volts of set voltage. Nickel cadmium battery units shall utilize a solid-state, constant current charger.

BATTERY - The battery shall be maintenance free, sealed lead calcium or maintenance free, sealed nickel cadmium.

HOUSING - The housing shall be constructed of gray, impact resistant, fiberglass reinforced polyester. The enclosure shall be UL approved for NEMA 3, 3r, 4, 4x, 12 and 13 classifications, and UL listed for wet or damp locations (optional). The unit shall include a one piece formed-in-place gasket to eliminate potential for seal failure. The unit shall come standard with two 7 or 9 watt black lamp heads for external mounting on unit. White or black internally mounted lamp heads shall be optional.

ALL SPECIFICATIONS SUBJECT TO CHANGE WITHOUT NOTICE



272 West Stag Park Service Road • Burgaw, NC 28425
(910) 259-1131 • FAX (800) 403-6927
www.lightguard.com

L2053R15
6/09 IH