

# BSL23C/BSL23

Emergency LED Driver

# PHILIPS bodine

A Division Of Philips Electronics North America Corporation

Up to 3.5 W emergency illumination with LEDs

## Product Summary

### UL RECOGNIZED

Factory Installation only  
(Indoor and Damp)



### Illumination Time

90 Minutes

### Full Warranty

5 Years (NOT pro-rata)

### Dual Input Voltage

120/277 VAC, 60 Hz

### AC Input Current

280 mA

### AC Input Power Rating

2.0 W

### Output Voltage

3.0 to 20.0 VDC

### Output Current

200 mA (Maximum)

### Output Power

3.5 W (Maximum)

### Test Switch

Single Pole

### Battery

High-Temperature,  
Maintenance-Free  
Nickel-Cadmium Battery  
7- to 10-Year Life Expectancy

### Battery Charging Current

250 mA

### Recharge Time

24 Hours

### Charging Indicator Light

LED

### Temperature Rating (Ambient)

0°C to +50°C  
(32°F to 122°F)

### Dimensions

9.4" x 2.4" x 1.5"  
(238 mm x 60 mm x 38 mm)  
Mounting Center 8.9" (226 mm)

### Weight

BSL23 - 1.8 lbs. (0.82 kg)  
BSL23C Type 1 - 2.8 lbs. (1.3 kg)  
BSL23C Type 2 - 2.4 lbs. (1.1 kg)



## Application

The BSL23C emergency LED driver works in conjunction with an AC LED driver that has an output current not to exceed 1.5 A, convert new or existing LED fixtures into emergency lighting. The emergency driver consists of a high-temperature nickel-cadmium battery, charger and electronic circuitry in one compact red case. The BSL23C can be used with an LED lighting load of up to 3.5 Watts at rated current of 200 mA for 90 minutes. If used in an emergency-only fixture, no AC driver is necessary. The BSL23 is suitable for indoor and damp locations and for sealed & gasketed fixtures, including fixtures rated for wet locations. The BSL23C is suitable for indoor and damp locations. Neither the BSL23C nor the BSL23 is not suitable for air handling heated air outlets and wet or hazardous locations. For more information about specific LED and AC driver compatibility, please call the factory.

## Operation

When AC power fails, the BSL23C immediately switches to the emergency mode, operating the LEDs at a reduced lumen output for a minimum of 90 minutes. When AC power is restored, the emergency driver automatically returns to the charging mode.

## Installation

The BSL23C does not affect normal fixture operation and may be used with either a switched or unswitched fixture. If a switched fixture is used, an unswitched hot lead must be connected to the emergency driver. The emergency driver must be fed from the same branch circuit as the AC driver. The BSL23 series may be installed inside (BSL23 only), on (both) or remote (BSL23C only) from the fixture. The emergency driver may be remotely installed up to half the distance the AC driver manufacturer recommends removing the AC driver from the LEDs or up to 50 feet, whichever is less. Installation is not recommended with fixtures where the ambient temperature may fall below 0° C.

## UL and Code Compliance

The BSL23C has been tested by Underwriters Laboratories in accordance with the standards set forth in UL 924, "Emergency Lighting and Power Equipment," and is UL Recognized for factory installation only. Emergency illumination time exceeds the National Electrical Code (NEC), Life Safety Code (NFPA-LSC) and UL 90-minute requirements.

## Specifiers Reference

Project \_\_\_\_\_ Type \_\_\_\_\_ Model No. \_\_\_\_\_  
Comments \_\_\_\_\_

L2301006

10/23/10 © Philips Emergency Lighting  
P.O. Box 460 Collierville, TN USA 38027-0460  
Sales 800-223-5728 FAX 901-853-5009  
Tech. Support 888-263-4638  
www.philips.com/bodine

# BSL23C/BSL23

Emergency LED Driver

Up to 4.5 W emergency illumination with LEDs

## Emergency Illumination

The BSL23C operates an LED load of up to 3.5 W at rated current (200 mA) for a minimum of 90 minutes.

## Specification

Emergency lighting shall be provided by using a LED fixture equipped with a Philips Bodine BSL23C emergency driver. This emergency driver shall consist of a high-temperature, maintenance-free nickel-cadmium battery, charger and electronic circuitry contained in one 9 3/8" x 2 3/8" x 1 1/2" red metal case. The BSL23C comes with 2' length(s) of flexible conduit. (The BSL23 does not have conduit.) An illuminated test switch (ITS) to monitor charger and battery and installation hardware shall be provided. The emergency driver shall be capable of operating an LED load of up to 3.5 Watts at a maximum rated current (200 mA) for a minimum of 90 minutes. It is suitable for indoor and damp locations and for sealed & gasketed fixtures (BSL23 only). The BSL23C shall have 2 Watts of input power and a 9.6 Watt-hour battery capacity and shall comply with emergency standards set forth by the current NEC. The emergency driver shall be UL Recognized for factory installation only and shall be warranted for a full five years from date of purchase.

## Installation Options and Ordering Codes

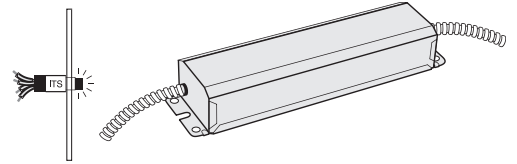
The BSL23C can be ordered in several mounting configurations and with different test switch/LED options. Please see the Ordering Codes at right to determine which configuration best meet your requirements.

## Warranty

Model BSL23C is warranted for five (5) full years from date of purchase. This warranty covers only properly installed Philips Bodine emergency LED drivers used under normal conditions. For the warranty period, Philips Emergency Lighting will, at its option, repair or replace without charge a defective emergency LED driver, provided it is returned to the factory transportation prepaid and our inspection determines it to be defective under terms of the warranty. Repair or replacement, as stated above, shall constitute the purchaser's exclusive warranty, which does not extend to transportation, installation, labor or any other charges; nor does it apply to any equipment of another manufacturer used in conjunction with the emergency driver.

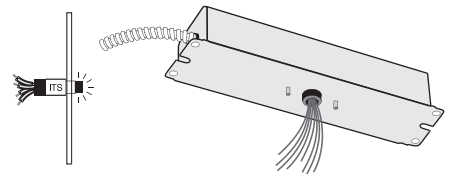
### BSL23C Type 1

Includes ITS on Wall Plate



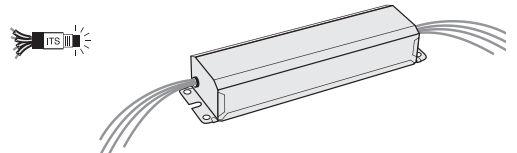
### BSL23C Type 2

Includes ITS on Wall Plate



### BSL23

Includes Loose ITS Parts Kit



*Test switch and LED wires exit unit through conduit. All other wires exit through lid. Studs are threaded so unit can be mounted on a J-box plate.*

L2301006

10/23/10 © Philips Emergency Lighting  
P.O. Box 460 Collierville, TN USA 38027-0460  
Sales 800-223-5728 FAX 901-853-5009  
Tech. Support 888-263-4638  
[www.philips.com/bodine](http://www.philips.com/bodine)