

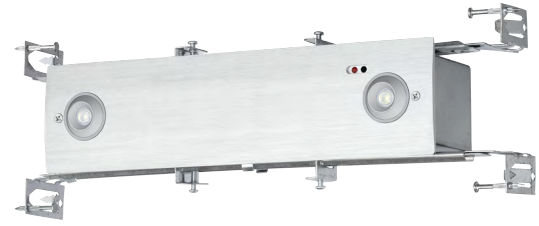
CELEM

RECESSED EMERGENCY LIGHT

tradeSELECT®

FEATURES

- LED life-cycle exceeding 10 years
- Battery re-charge within 24 hours
- Damp location listed 10°C to 40°C (50°F to 104°F)
- Dual-voltage 120 or 277V AC, 60 Hz. input
- Includes long-life Nickel Metal Hydride battery for UL recognized 90 minute emergency lighting
- Provided with test switch and AC-On indicator
- Matching CELC Edge-Lit Combination Exit/Emergency Light



SPECIFICATIONS

CONSTRUCTION

- The lamps are adjustable and integrated into the aluminum trim-plate

INSTALLATION

- The CELEM Series is designed for ceiling mount, and can be applied in hallways, offices and other commercial applications
- The CELEM is provided with a steel back-box complete with adjustable caddy-bar assembly

ELECTRICAL

- Long-life Nickel Metal Hydride battery
- Emergency illumination provided by a single high-power LED with 125 lumens per lamp
- The emergency light is designed to provide UL924 compliant emergency lighting for the full 90 minutes

CERTIFICATIONS

- UL924 Listed for Damp Location
- NFPA 101 and NFPA 70
- OSHA

RELATED PRODUCTS

- ⌘ [CIR Remote](#)
- ⌘ [COR Remote](#)
- ⌘ [CELC Combination Exit/Emergency Light](#)

WARRANTY

- 2 year full unit warranty
- See [HLI Standard Warranty](#) for additional information

ORDERING GUIDE

| Catalog Number | Description |
|----------------|--|
| CELEM | Recessed mounting Emergency light, 250 lms |
| CELEMHO | Recessed mounting Emergency light, 400 lms |

ENERGY CONSUMPTION

| | 120VAC | | 277VAC | |
|-------|--------|------|--------|------|
| | Watts | Amps | Watts | Amps |
| CELEM | 2.2W | 18mA | 2.5W | 9mA |

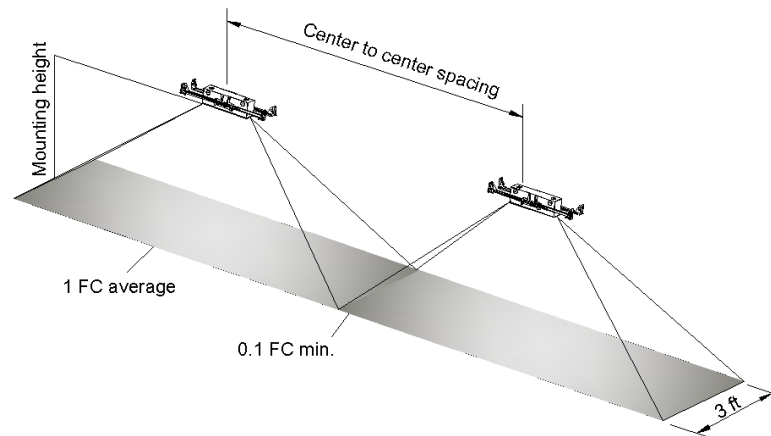
CELEM

RECESSED EMERGENCY LIGHT

MATCHING ACCESSORIES - CELC COMBINATION EDGE-LIT EXIT EMERGENCY LIGHT

| Catalog Number | Description |
|----------------|--|
| CELCR1RN | Recessed mounting, Single Face, Red Letters, Brushed Aluminum |
| CELCR2RN | Recessed mounting, Double Face, Red Letters, Brushed Aluminum |
| CELCR1GN | Recessed mounting, Single Face, Green Letters, Brushed Aluminum |
| CELCR2GN | Recessed mounting, Double Face, Green Letters, Brushed Aluminum |
| CELCS1RN | Surface mounting, Single Face, Red Letters, Brushed Aluminum |
| CELCS2RN | Surface mounting, Double Face, Red Letters, Brushed Aluminum |
| CELCS1GN | Surface mounting, Single Face, Green Letters, Clear, Brushed Aluminum |
| CELCS2GN | Surface mounting, Double Face, Green Letters, Mirror, Brushed Aluminum |

APPLICATION INFORMATION



| No. | Model | Spacing @ 7.5ft. mounting height | Spacing @ 10ft. mounting height |
|-----|---------|----------------------------------|---------------------------------|
| 1 | CELEM | 24ft. | 25ft. |
| 2 | CELEMHO | 30ft. | 30ft. |

DIMENSIONS

