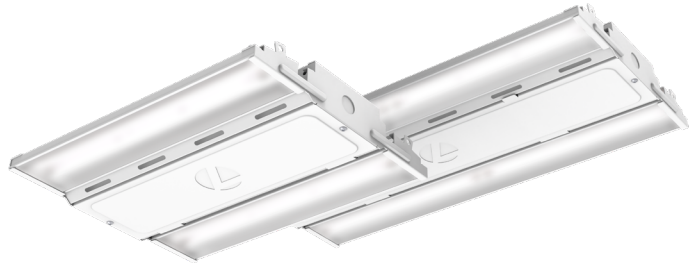




Catalog Number
Notes
Type

Contractor Select™  
**COMPACT PRO™**  
 LED High Bay



The Compact Pro High Bay (CPHB) is a budget-oriented high bay designed specifically with the contractor in mind. Its compact design makes it easier and quicker to install. Compact Pro is built with quality to last and performance to meet the needs of the job, making it the best choice for affordable and reliable light-duty industrial applications like warehouses.

**FEATURES:**

- Compact design saves time and money during installation
- Innovative Glare Control lens meets new DLC 5.1 standards
- Robust 6kV surge protection standard per ANSI standards for Industrial environments
- Operates up to 55°C ambient
- Includes mounting hardware (V-hook & 36" hanger chain)



Catalog Number	UPC	Description	Lumens	Input Watts	Color Temperature	Color Rendering	Voltage	Distribution	Pallet Qty.
CPHB 12LM MVOLT 40K	00194994608325	14" LED High Bay	12,261	88	4000 K	80 CRI	120-277V	Medium	144
CPHB 12LM MVOLT 50K	00194994429548	14" LED High Bay	12,342	88	5000 K	80 CRI	120-277V	Medium	144
CPHB 15LM MVOLT 40K	00194994429562	14" LED High Bay	14,857	104	4000 K	80 CRI	120-277V	Medium	144
CPHB 15LM MVOLT 50K	00194994429593	14" LED High Bay	14,955	104	5000 K	80 CRI	120-277V	Medium	144
CPHB 18LM MVOLT 40K	00194994608295	14" LED High Bay	18,364	134	4000 K	80 CRI	120-277V	Medium	144
CPHB 18LM MVOLT 50K	00194994429630	14" LED High Bay	18,485	134	5000 K	80 CRI	120-277V	Medium	144
CPHB 24LM MVOLT 40K	00194994429685	22" LED High Bay	24,890	174	4000 K	80 CRI	120-277V	Medium	96
CPHB 24LM MVOLT 50K	00194994429753	22" LED High Bay	25,054	174	5000 K	80 CRI	120-277V	Medium	96
CPHB 30LM MVOLT 40K	00194994429746	22" LED High Bay	30,298	214	4000 K	80 CRI	120-277V	Medium	96
CPHB 30LM MVOLT 50K	00194994429784	22" LED High Bay	30,498	214	5000 K	80 CRI	120-277V	Medium	96

More configurations are available. [Click here](#) or visit [www.acuitybrands.com](http://www.acuitybrands.com) and search for CPHB.

Accessories: Order as separate catalog number.	
<b>Mounting:</b>	<b>Wire guards:</b>
IBAC120 M100 Aircraft cable 10' with hook (one pair)	WGCPHBSM Wire guard for CPHB (12LM - 18LM)
IBAC240 M75 Aircraft cable 20' with hook (one pair)	WGCPHBMD Wire guard for CPHB (24LM - 30LM)
IBHMP Hook monopoint	
CPHBPMPSM Pendant Monopoint splice box with 3/4" hub (for 12LM - 18LM) ‡	
CPHBPMPMD Pendant Monopoint splice box with 3/4" hub (for 24LM - 30LM) ‡	
ZACVH Aircraft 10' V hanger (one pair)	
THUN Surface mount bracket (order 2 per fixture)	

‡ Option Value Ordering Restrictions	
Option value	Restriction
CPHBPMPSM/MD	Pendant monopoint splice boxes will require wiring from access plate to splice box KO if power is being dropped through pendant conduit. Fixture does not have a KO in center to pull power out of driver channel through splice box



## Specifications

### INTENDED USE:

Ideal one-for-one replacement of conventional lighting systems such as HID and fluorescent. For use in light Industrial applications such as warehousing and other large indoor spaces with mounting heights ranging from 10' - permitted. **Certain airborne contaminants can diminish integrity of acrylic and/or polycarbonate.** [Click here for Acrylic-Polycarbonate Compatibility table for suitable uses.](#) **Certain airborne contaminants may adversely affect the functioning of LEDs and other electronic components, depending on various factors such as concentrations of the contaminants, ventilation, and temperature at the end-user location.** [Click here for a list of substances that may not be suitable for interaction with LEDs and other electronic components.](#)

### CONSTRUCTION:

Extruded aluminum channels enable superior thermal performance.  
Glare Control Lens diffuses light source and reduces glare while protecting LEDs.  
Lens meets DLC 5.1 standards for UGR (Unified Glare Rating)

### ELECTRICAL:

70% lumen maintenance at > 100,000 hours.  
Thermally protected driver standard with 0-10V dimming.  
Luminaire surge protection level: designed to withstand up to 6kV/3kA per ANSI C82.77-5-2015.  
Multi-volt driver, 120-277V standard.

### INSTALLATION:

Fixture package includes V-hanger hardware kit with 2- V-hanger brackets and 2- 36" chain lengths.  
Fixture is suitable for mounting by chain, cable, surface-mount bracket, or hook monopoint. Surface mounting available using optional THUN surface mount bracket (order separately). Designed for use in ambient temperatures ranging from -40°C to 55°C when suspended 18" off ceiling. Max operating temperature of 45°C when surface mounted.

### LISTINGS:

CSA listed. Damp location listed.  
DesignLights Consortium® (DLC) Premium qualified product. Not all versions of this product may be DLC Premium qualified. Please check the DLC Qualified Products List at [www.designlights.org/QPL](http://www.designlights.org/QPL) to confirm which versions are qualified.

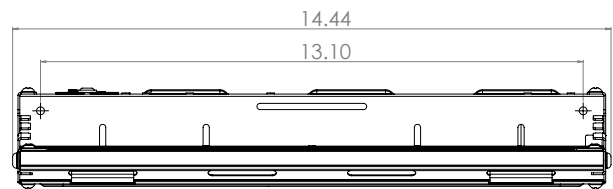
### WARRANTY:

5-year limited warranty. Complete warranty terms located at: [www.acuitybrands.com/support/warranty/terms-and-conditions](http://www.acuitybrands.com/support/warranty/terms-and-conditions)

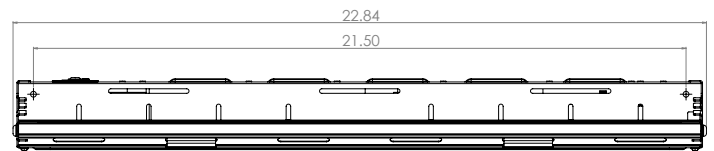
**Note:** Actual performance may differ as a result of end-user environment and application. All values are design or typical values, measured under laboratory conditions at 25 °C. Specifications subject to change without notice.

## Dimensions

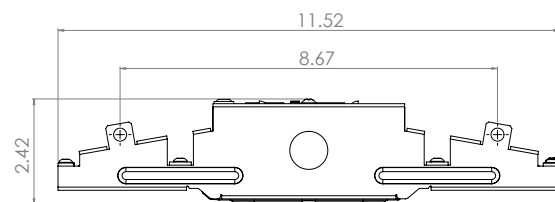
All dimensions are inches (centimeters) unless otherwise indicated.



Side View: CPHB 12LM, 15LM, 18LM



Side View: CPHB 24LM, 30LM



End View: CPHB 12LM, 15LM, 18LM, 24LM, 30LM

Lumens package	Length	Width	Depth	Weight
	Dimensions shown in inches (centimeters)			Shown in pounds (kg)
12000LM	14.4 (36.6)	11.5 (29.2)	2.3 (5.8)	5 (2.2)
15000LM	14.4 (36.6)	11.5 (29.2)	2.3 (5.8)	5 (2.2)
18000LM	14.4 (36.6)	11.5 (29.2)	2.3 (5.8)	6.5 (2.9)
24000LM	22.8 (57.9)	11.5 (29.2)	2.3 (5.8)	8 (3.6)
30000LM	22.8 (57.9)	11.5 (29.2)	2.3 (5.8)	8 (3.6)