



# ComfortView LED

Patient Room

Project:

Type:

Qty:

## SPECIFICATIONS

## Patient Room

## HCV2

### SPECIFICATIONS

General lighting in radiology, oncology, and specialized treatment areas should create a calming atmosphere to ease patient tensions as much as possible. Ceiling fixtures with interesting graphics such as colorful landscape scenes can provide a pleasant distraction while patients are prone or recumbent for long periods of time. We offer a library of impressive images to choose from; visit the image library on our website. Our proprietary lens construction results in a high-definition effect with amazing color. Choose a single fixture to provide a backlit focal point, or spread the image across an arrangement of fixtures to create a panoramic view.

#### Housing

.050" Aluminum Housing and Door  
Polyester powder coat finish; anti-microbial powder coat finish available.

#### Lens

.175" thick acrylic lens with National Geographic images.

#### Source

Low output linear LED boards with Nichia LED 757 chipsets.

#### LED Driver

Acuity Accudrive (standard)  
Thomas Research (optional)

#### Switching

Line voltage switching (by others).

#### Weight

HCV222 – approximate shipping weight 18 lbs  
HCV224 – approximate shipping weight 31 lbs

#### Voltage

Multi-Volt (120-277V)

#### Light Output (As Tested)

2x4 - 654 Lumens  
2x2 - 327 Lumens

#### Input Watts (As Tested)

2x4 Accudrive - 79.82 Watts  
2x2 - 39.91 Watts

#### Dimming

0-10V Dimming to 1%

#### Color Quality

>80 CRI

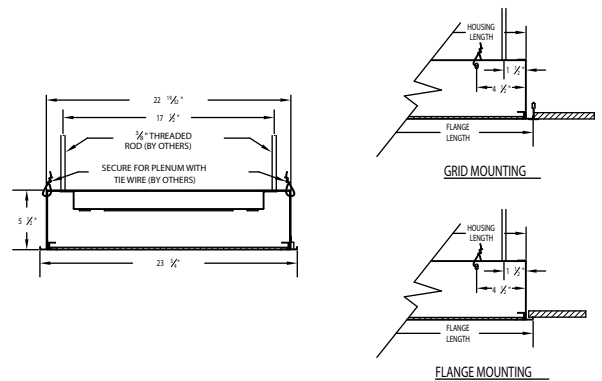
#### Life Estimate

>50,000 hours according to component LM80 testing.

#### Warranty

5-year limited warranty. Complete warranty terms located at:  
[www.acuitybrands.com/resources/terms-and-conditions](http://www.acuitybrands.com/resources/terms-and-conditions)

**NOTE:** Actual performance may differ as a result of end-user environment and application.  
All values are design or typical values, measured under laboratory conditions at 25 °C.



Fixture	Housing Length	Flange Length
HCV222	22 1/2"	23 3/4"
HCV224	46 1/2"	47 3/4"

### CATALOG NUMBER

Example: HCV224 G MVOLT SP0 LED35 H1 G1278 GWAM

Series	Mounting	Voltage	Fixture Spacing	Lamping Type	Configurations	Image Number	Finish
HCV222	2 ft x 2 ft fixture G Grid F Flange	MVOLT 120-277V	SP0 0-inch SP1 1-inch (Standard Grid) SP15 1.5-inch grid SPN Non-standard	LED35 3500K LED	For 2x2 FT For 2x4 FT A1 H1 B2 I1 C2 J2 D4 K2 E6 L3 F6 M3 G9	View image gallery on website (e.g. G1278)	GW Gloss White (Standard) GWAM Anti-Microbial White
HCV224	2 ft x 4 ft fixture						

### Notes

- 1 Non-standard configurations contact factory.
- 2 Contact factory for special dimming requirements.
- 3 Non-standard wiring contact factory.

# ComfortView LED

Patient Room

Project:

Type:

Qty:

## SPECIFICATIONS

## Patient Room

HCV2

### CEILING PATTERN CONFIGURATIONS

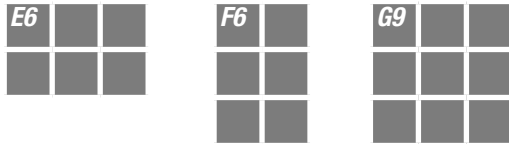
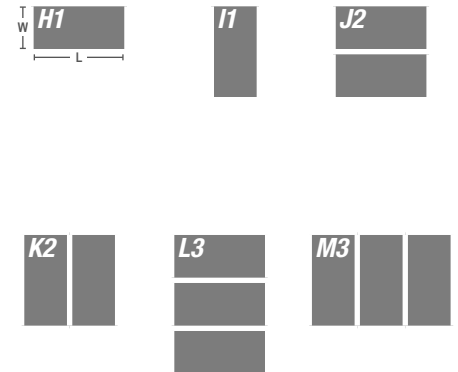
Fixture Configuration	
Configuration	Size (W x L)
A1	2' x 2'
B2	2' x 4'
C2	4' x 2'
D4	4' x 4'
E6	4' x 6'
F6	6' x 4'
G9	6' x 6'

#### Gallery Chart 2x2



Fixture Configuration	
Configuration	Size (W x L)
H1	2' x 4'
I1	4' x 2'
J2	4' x 4'
K2	4' x 4'
L3	6' x 4'
M3	4' x 6'

#### Gallery Chart 2x4



### PERFORMANCE DATA

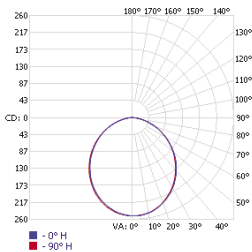
#### Lumen Output

Lumen values are from photometric tests from an accredited laboratory. Data is considered to be representative of the configurations shown, within generally accepted industry tolerances. Contact factory for performance data on any configurations not shown here.

Configuration	Lumen Output (lm)	Max Candela	Input Watts
HCV224 LED 35	654	252	79.82
HCV222 LED35	327	126	39.91

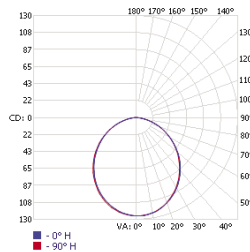
### PHOTOMETRICS

Test Report: LTL28477  
HCV224 LED 35 Accudrive  
Lumens: 654.6  
Wattage: 79.82 W  
Efficacy: 8.2 Lm/W  
Max. Candela: 252.2 @ H: 112.5°; V: 2.5°



Illuminance at a Distance	
Height	Center Beam Footcandle
2.0	62.8 FC
4.0	15.7 FC
6.0	7.0 FC
8.0	3.9 FC
10.0	2.5 FC

Test Report: LTL28477P2  
HCV222 LED 35  
Lumens: 327.3  
Wattage: 39.91 W  
Efficacy: 8.2 Lm/W  
Max. Candela: 126 @ H: 112.5°; V: 2.5°



Illuminance at a Distance	
Height	Center Beam Footcandle
2.0	31.4 FC
4.0	7.8 FC
6.0	3.5 FC
8.0	2.0 FC
10.0	1.3 FC

Photometric data based on test results from an independent NIST traceable testing lab. IES data is available at [www.healthcare-lighting.com](http://www.healthcare-lighting.com). Always refer to our website for the latest IES file updates.

# ComfortView LED

Patient Room

Project:

Type:

Qty:

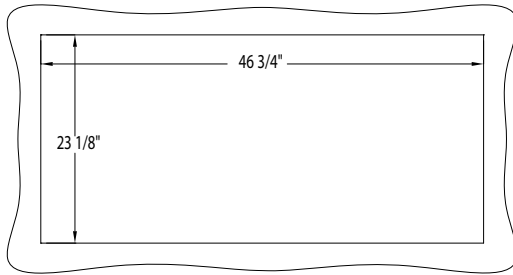
SPECIFICATIONS

Patient Room

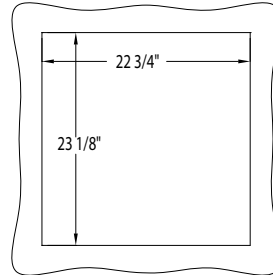
HCV2

## MOUNTING INFORMATION

### HINGE SIDE



HCV224 FLANGE



HCV222 FLANGE

#### Notes:

- Grid fixture is designed for 15/16" flat-tee. (consult factory for other types)
- Secure fixture to the plenum (by others) [with tie wires or 3/8" threaded rod].
- Fixture cannot be supported by ceiling system alone (must be secured to plenum).
- Height of fixture can vary based upon options chosen (consult factory for details).
- Consult fixture Installation Instructions for more details.
- It is the responsibility of the person installing the light fixture to ensure that the materials, hardware and building structural members that are selected will support the light fixture(s) and that they meet all applicable building and safety codes.
- Tie wire or threaded rods MUST BE USED to support the weight of the fixtures.