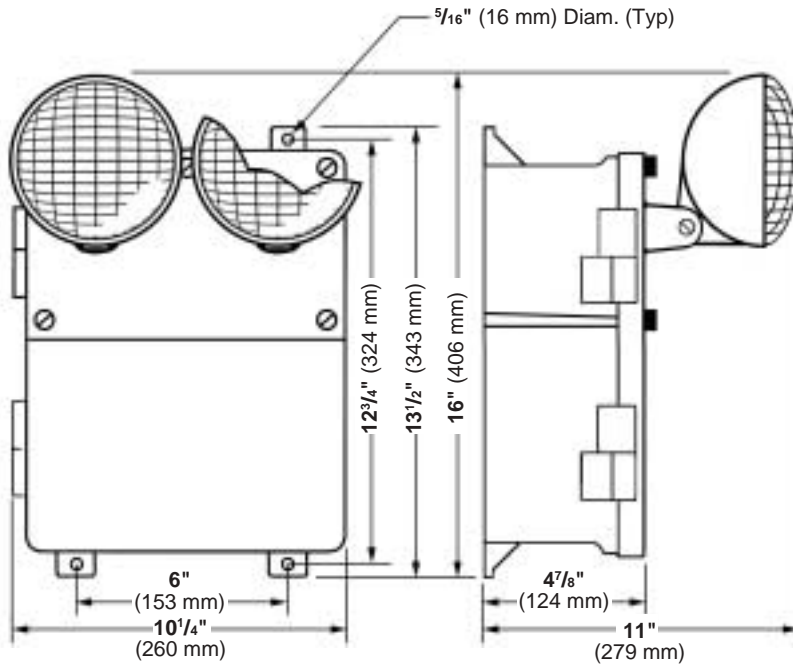


Presc•lite

Life Safety Products

Type: _____



Sealed and gasketed, the N4XP series is designed to be strong, rugged and technologically reliable. Made of high impact, engineering grade polymer, the N4XP series is designed for harsh or corrosive environments.

N4XP Series

15-100W

6 and 12Volt

Damp and Harsh
Environment
Emergency Units

Suitable for the following
demanding environments



Corrosive



Damp



Standard Features

- Sealed and gasketed construction
- Corrosion resistant hardware
- Charcoal grey thermoplastic case
- Available in 6- or 12-volt versions
- Fully adjustable lampheads
- Maintenance-free battery
- Capacities up to 100W
- Matching remote fixture
- 120/277VAC operation standard
- Fully automatic, solid-state charger
- Low-voltage battery disconnect
- Transformer isolation protection
- Test switch and AC-On light
- Available with **CVS** self-testing electronics
- 90 minute operation
- Temperature range: 10°C to 40°C (50°F to 104°F)
- UL924 Listed

Model Numbers

N4XP2 (6V, 15W)

N4XP4 (6V, 31W)

N4XP7 (6V, 50W)

N4XP7-12V (12V, 50W)

N4XP14 (6V, 100W)

N4XP14-12V (12V, 100W)

Options (Add suffix to catalog number)

CVS

Continuous Verification System⁽¹⁾

-0

Unit supplied without lighting heads⁽²⁾

-1

Unit supplied with one lighting head

-T

Halogen lamp option⁽³⁾

-A3 (120V) Auxiliary 3-conductor AC line cord (120V)

-A3 (277V) Auxiliary 3-conductor AC line cord (120V)

⁽¹⁾ Add "CVS" self-test option suffix after base model number. Example: N4XP7CVS

⁽²⁾ Not available with N4XP2 model.

⁽³⁾ Specify voltage and wattage when ordering.

Accessories (Order Separately)

40G

Wire guard

PN4X

Matching remote lighting head - single⁽⁴⁾

MP-100

Mounting Plate - single

MP-101

Mounting Plate - twin

⁽⁴⁾ Supplied without mounting plate.

Specify voltage and wattage when ordering.

Example: PN4X0618.

See Remote Fixtures data sheet 0601888.



Hubbell Lighting, Inc.

Housing:

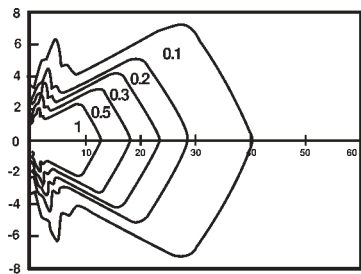
Molded from high impact thermoplastic polycarbonate in a gray finish. Front cover is hinged. Unit and lamps are completely sealed and gasketed. Battery compartment is vented for safety. Pre-drilled mounting flanges for easy installation are standard. Drilling template is provided for top entry of power or remote load conduit. Connections for remote loads are fused.

Light Source

6 volt N4XP Series models are furnished standard with two 7.2 watt PAR-36 sealed beam type lamps. 12 volt N4XP Series models are furnished standard with two 9 watt PAR-36 sealed beam type lamps. Lamp terminals are coated to prevent corrosion and the lamp head swivel is sealed from the environment. Fully adjustable injection molded lamphead assemblies will remain in place once they are aimed in the desired direction.

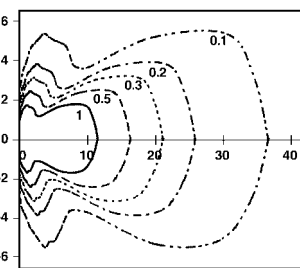
6 Volt, 7.2 Watt SBT Lamp

Horizontal Distribution



12 Volt, 9 Watt SBT Lamp

Horizontal Distribution



Optional Lamps

To order two nonstandard lamps on the fixture, suffix catalog number. See "Remote Fixtures" data sheet (0601888) for available lamps. Example: **N4XP7-0618**.

Battery:

A maintenance-free lead-acid battery is provided. The battery is completely sealed and it is never necessary to add water.

Electronics:

A solid-state charger is standard. Charger voltage is regulated to $\pm 1\%$ of nominal system voltage. The charger is current limited and protected against short circuit and reverse polarity conditions. Transfer to emergency operation is completely automatic upon failure of utility AC voltage. A low voltage disconnect circuit prevents deep discharge damage to the unit battery during prolonged power

outages. An AC lock-out prevents battery discharge before the unit is energized with AC power. Full battery recharge occurs in compliance with UL 924 specifications. A universal 120/277VAC, 60Hz input transformer, test switch and long life AC pilot light are all provided standard.

Power Consumption

20 watts (maximum)

Limited Warranty

Description	Warranty In Years		
	Unit Full	Battery	
		Full	Pro-Rata
N4XP Series	3	3	3
N4XP Series with CVS option	5	5	5

Batteries must be placed in service or recharged within nine (9) months from factory shipment date. This warranty only applies when the product is used as intended. Any abuse or misuse contrary to normal installation or operation shall void this warranty.

Suggested Specification

Self contained emergency lighting unit shall be Prescolite Life Safety Products model _____. The unit shall supply the rated load for a minimum of 1½ hours to not less than 87½% of rated battery voltage. The unit shall be rated 120/277VAC, 60HZ and be listed by Underwriters Laboratories to Standard 924. The emergency power source shall be a fully rechargeable maintenance-free lead-acid battery. The housing shall be constructed of thermoplastic polycarbonate with a hinged cover, pre-drilled mounting flanges and vented battery compartment. Finish shall be gray. Construction shall be sealed and gasketed against harsh environmental conditions. Electronics shall include a fully automatic charger with regulated charge voltage and short circuit protection. A low voltage disconnect and AC lockout will also be included. Illumination shall be provided by two (7.2)(9) watt PAR 36 sealed beam type incandescent lamps housed in fully directional, high impact thermoplastic lamphead assemblies. Lamp terminals are coated to prevent corrosion and the lamp head swivel is sealed from the environment.

Product Selector Guide

Base Catalog Numbers	Electrical							
	Output Volts	Battery Type	Output Watts				Standard Lamps	Remote Capability
			1.5 Hours	2 Hours	3 Hours	4 Hours		
N4XP2	6	Lead-Acid	15	—	—	—	7.2W	No
N4XP4	6	Lead-Acid	31	22	15	—	7.2W	Yes
N4XP7	6	Lead-Acid	50	36	29	22	7.2W	Yes
N4XP7-12V	12	Lead-Acid	50	36	29	22	9W	Yes
N4XP14	6	Lead-Acid	100	79	61	44	7.2W	Yes
N4XP14-12V	12	Lead-Acid	100	79	61	44	9W	Yes